

CCOSS - kubernetes

¿Cómo contribuir al proyecto?

Eduar
Toño



kubernetes

*contribuir **no** se trata de sólo enviar **código**,
se tratar de ayudar a la **comunidad***

@TheNikhita



Introducción



Kubernetes (K8s) es:

- un proyecto Open Source

Para gestionar

- Automatización de despliegues
- Escalabilidad
- Aplicaciones en contenedores

Algunos Datos



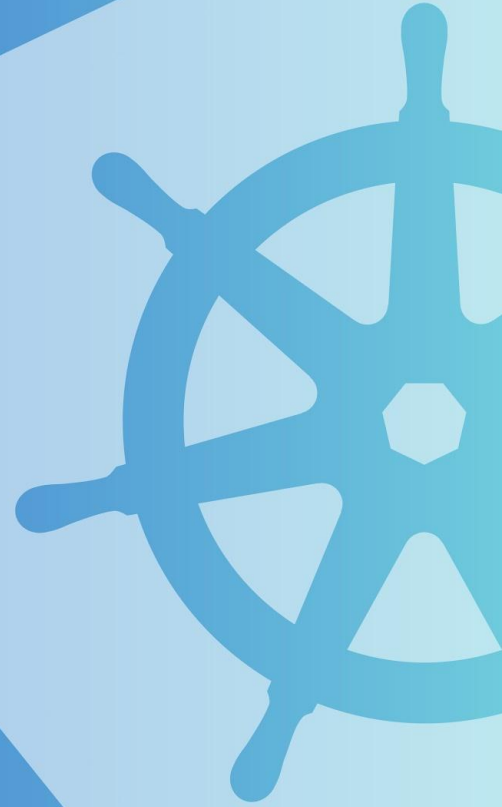
- Kubernetes fue presentado en sociedad, como OSS, en 2014
- Es un proyecto que nació en Google. El proyecto interno Borg dio pie a K8
- Hoy es gobernado por la CNCF
- Es el primer proyecto graduado de la CNCF
- Está escrito en Go
- Compatible con Linux y Windows (server 2019)
- Compatible con varios container runtimes (docker, containerd, cri-o, etc.)

Algunos Números

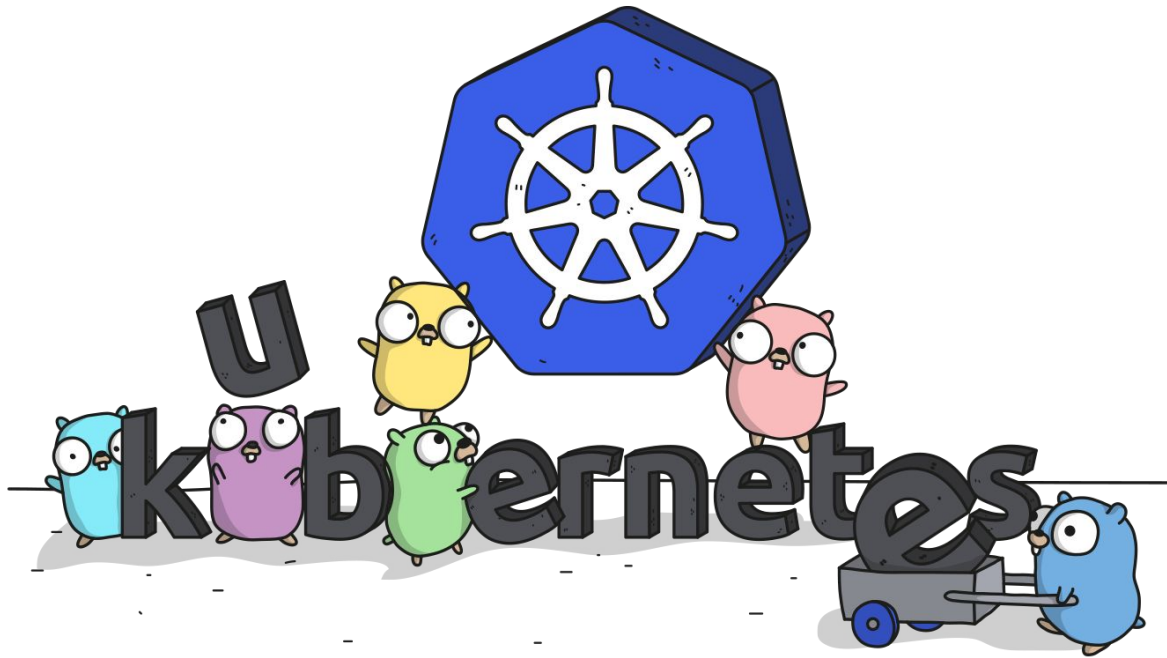


- Lo usa (casi) todo el mundo
- 57358 estrellas en GitHub
- 2264 contribuidores
- 550 releases
- 39 ramas
- 82857 commits
- Está en la versión 1.15
- 20023 forks

Social Engineering



¿Quién puede contribuir a Kubernetes?



Credit Ashley McNamara and <https://github.com/ashleymcnamara/gophers> for this image. Credit Renee French for the original gopher concept and design.

¿Por qué contribuir a kubernetes?



CNCF



**CLOUD NATIVE
COMPUTING FOUNDATION**



kubernetes

¿Qué camino tomar en la comunidad?



Contribuciones según tu empleo



¿Cuál sería tu origen?



Un Vistazo a:

<https://github.com/kubernetes/community/issues/3064>

Ejercicio



Encuentra tu tema.

- En su mesa, dé la vuelta a la mesa en círculo y explique (o especule) a qué parte de Kubernetes le gustaría contribuir.
- Además, explique qué le motiva en sus antecedentes, trabajo o intereses.

Comunicación en la comunidad



Cuando eres bien con todos



When you're chill with everyone



El estándar de comunicación



Todos son muy amables

Creemos que el respeto mutuo es un requisito previo para una colaboración saludable.

<https://git.k8s.io/community/code-of-conduct.md>



kubernetes

Tradiciones



Tenemos algunas tradiciones aceptadas.

Las preguntas técnicas van en StackOverflow, Slack o Discuss, no en Github.

Los issues de Github y las solicitudes de PR a menudo implican una discusión relacionada con el tema en cuestión. Sea cortés y haga un seguimiento.

Sé paciente ya que las personas que pueden responder tus preguntas y contribuciones pueden estar en el otro lado del mundo.

Platica en los pasillos



Comunicación en línea



- Slack
- discuss.kubernetes.io
- Mailing lists (Google Groups)
- Github PRs & Issues
- Meetings on Zoom



The screenshot shows a Slack channel named #es-users. The channel header indicates 272 members and 1 topic. The date is Tuesday, May 14th. The conversation includes:

- Junior Perdomo** (10:55 PM): joined #es-users.
- Junior Perdomo** (10:55 PM): hola buenas tardes comunidad
- 10:57 PM**: Para preguntar dudas o problemas con el funcionamiento de k8s es este el grupo?
- rael** (10:57 PM): Así es! Bienvenido!
También está el foro por si crees que te va mejor expresarte allí <https://discuss.kubernetes.io/c/regional-discussions/spanish>
- Junior Perdomo** (10:58 PM): Gracias
Estoy estudiando para la certificación así que ante cualquier duda les preguntare
- rael** (10:58 PM): Genial, así aprendemos todos.
- funchinho** (10:59 PM): qué es lo recomendado, usar el foro o usar stack overflow?
- rael** (11:01 PM): El foro está empezando, necesita más comunidad, pero ambas son buenas opciones.

The interface includes a search bar, a list of channels on the left, and a message input field at the bottom.



En caso de duda, pregunta en Slack!



Los buenos canales para comenzar son:

#kubernetes-users,
#kubernetes-novice,
#sig-contribex

discuss.kubernetes.io

A screenshot of the web browser displaying the Kubernetes community forums. The browser's address bar shows the URL https://discuss.kubernetes.io. The website header includes the Kubernetes logo and navigation links for Documentation, Blog, Partners, Community, and Case Studies. The main heading is "Community Forums" with a subtext stating the site is governed by the CNCF Code of Conduct. Below this, there is a filter section with "Categories" selected, and a list of forum topics. The first topic is "Announcements" with 8 topics in the category and 2 new posts. The second topic is "Welcome to Discuss Kubernetes" with 0 posts from August 2018.

Discuss Kubernetes

https://discuss.kubernetes.io

kubernetes Documentation Blog Partners Community Case Studies

Community Forums

This site is governed by the CNCF Code of Conduct. Checkout our quick tutorial on how to effectively subscribe to topics.

This site is governed by the CNCF Code of Conduct. Check out our quick tutorial video on how to effectively subscribe to topics.

all categories Categories Latest New (9) Top + New Topic

Category	Topics	Latest
Announcements	8 / month 2 new	Welcome to Discuss Kubernetes 0 Aug '18



Mailing list



- Uno por SIG / WG
 - (algunos se usan más que otros)
- Corren en GoogleGroups
 - (restricciones de acceso de China)
- Necesitas unirte a:
 - kubernetes-dev
 - Requerido para ser miembro de la organización

stackoverflow.com/search?q=kubernetes



Posts containing 'kubernetes' - 51 x

https://stackoverflow.com/search?q=kubernetes

stack overflow kubernetes

Home PUBLIC Stack Overflow Tags Users Jobs Teams Q&A for work Learn More

Search Results

Advanced Search Tips Ask Question

Results for kubernetes

kubernetes Search

41,620 results Relevance Newest More

350 votes Q: What's the difference between Apache's Mesos and Google's Kubernetes
What exactly is the difference between Apache's Mesos and Google's **Kubernetes**? I understand both are server cluster management software. Can anyone elaborate where the main differences are - when would which framework be preferred? Why would you want to use **Kubernetes** on top of Mesosphere? ...
6 answers cloud cluster-computing mesosphere kubernetes asked Nov 2 '14 by binaryanomaly

126 votes Q: Kubernetes: Ingress vs Load Balancer
I am quite confused about the roles of Ingress and Load Balancer in **Kubernetes**. As far as I understand Ingress is used to map incoming traffic from the internet to the services running in the ... cluster. The role of load balancer is to forward traffic to a host. In that regard how does ingress differ from load balancer? Also what is the concept of load balancer inside **kubernetes** as compared to Amazon ELB and ALB? ...
4 answers kubernetes load-balancing asked Jul 13 '17 by arunkjn

156 votes Q: What's the difference between docker compose and kubernetes?
While diving into Docker, Google Cloud and **Kubernetes**, and without clearly understanding all three of them yet, it seems to me these products are overlapping, yet they're not compatible. For example ... , a docker-compose file, needs to be re-written so an app can be deployed to **Kubernetes**. Could someone provide a high level rough description of where Docker, Docker-Compose, Docker Cloud, and

Hot Network Questions

- How was the blinking terminal cursor invented?
- Failing students when it might cause them economic ruin
- Roman Numerals Equation 2
- Does a non-singular matrix have a large minor with disjoint rows and columns and full rank?
- Holding rent money for my friend which amounts to over \$10k?
- Promotion comes with unexpected 24/7/365 on-call
- Rushed passport - does my reason qualify?
- How does this piece of code determine array size without using sizeof() ?
- Physically unpleasant work environment
- How come Arya Stark wasn't hurt by this in Game of Thrones Season 8 Episode 5?
- Why is vowel phonology represented in a trapezoid instead of a square?
- Is there a Variable allocated on the Heap?
- Do high-wing aircraft represent more difficult engineering challenges than low-wing aircraft?
- Cuban Primes
- How to pass store code to custom URL in magento 2
- Why didn't Daenerys' advisers suggest assassinating Cersei?



git.k8s.io



The screenshot shows the GitHub profile for the Kubernetes organization. The page header includes the GitHub logo, a search bar, and navigation links for Pull requests, Issues, Marketplace, and Explore. The main content area features the Kubernetes logo and name, followed by a verified badge and the website URL https://kubernetes.io. Below this, there are statistics for Repositories (68), People (853), Teams (293), and Projects (27). The 'Pinned repositories' section displays six repositories:

Repository Name	Description	Language	Stars	Forks
kubernetes	Production-Grade Container Scheduling and Management	Go	52.7k	18.2k
enhancements	Features tracking repo for Kubernetes releases	Shell	615	360
community	Kubernetes community content	Go	4k	2k
website	Kubernetes website and documentation repo:	HTML	1.3k	4.6k
test-infra	Test infrastructure for the Kubernetes project.	Go	1.2k	851
examples	Kubernetes application example tutorials	Shell	2.1k	1.3k

At the bottom of the repository list, there is a search bar labeled 'Find a repository...' and two filter dropdowns: 'Type: All' and 'Language: All'.



Zoom Meetings



Zoom Meeting ID: [redacted]

Recording...

Participants (37)

- Noah (Me)
- Aaron of SIG Beard
- Marco Ceppi
- Paris (Co-host)
- Google
- vantuvt
- Rick Lindberg

Unmute Me Raise Hand

Zoom Group Chat

From Jorge O. Castro... to Everyone:

A reminder that a bunch of documents and getting started guides encourage people to go to these good-first-issues.

so if you can keep a nice healthy pile it's a good thing.

From Paris to Everyone:

outreachy internships just went live, too. These applicants will be looking for good-first-issue labels to make a contribution.

From ruiosarecanna to Everyone:

To: Everyone

Type message here



Zoom meetings



El horario está en el calendario de la comunidad.

- Reuniones SIG
- Reunión semanal de la comunidad
- Reuniones especiales

¡No tengas miedo de preguntar sobre los horarios de las reuniones!
(pero también sé comprensivo)

Otras formas de comunicación



- Conoce a nuestros colaboradores (meet our contributors)
Discusión mensual en video en vivo con colaboradores
- Horas de oficina (office hours)
- KubeCons
- Reuniones SIG cara a cara
- Meetups

Ve a un meetup



Ejercicio: Vamos a comunicarnos!



- Únete Discutir
- Únete a Slack
- Suscríbete a kubernetes-dev
- Suscríbete al calendario de la comunidad

Links



<https://kubernetes.io/community/>

<https://discuss.kubernetes.io>

<http://slack.k8s.io/>

<https://groups.google.com/forum/#!forum/kubernetes-dev>

<https://git.k8s.io/community/events/community-meeting.md>

<https://git.k8s.io/community/events/office-hours.md>

<https://git.k8s.io/community/mentoring/meet-our-contributors.md>



kubernetes



<https://groups.google.com/forum/#!forum/kubernetes-sig-contribex>

Special Interest Groups



¿Cómo es
organizado el
trabajo?

Special Interest Group (SIG)

Apps	Node	Auth	Instrumentation	AWS	Testing
UI	Autoscaling	Federation	Cluster Ops	Contributor Experience	Windows
Docs	Scalability	API Machinery	Network	Cluster life cycle	Big Data
OpenStack	rktnetes	Scheduling	Service Catalog	Storage	On-Prem

¿Dónde consigo los SIGs?



<https://git.k8s.io/community/sig-list.md>

Tipos de SIGs



- Áreas de funcionalidades
- Plumbing
- Proveedores de la nube
- Meta
- Docs

Por áreas de funcionalidad



sig-auth

sig-apps

sig-autoscaling

sig-big-data

sig-cli

sig-multicluster

sig-network

sig-node

sig-scalability

sig-scheduling

sig-service-catalog

sig-storage

sig-ui

sig-windows

Plumbing



sig-api-machinery

sig-cluster-lifecycle

sig-instrumentation



kubernetes

Cloud Providers



sig-aws

sig-cloud-provider

sig-azure

sig-gcp

sig-ibmcloud

sig-openstack

sig-vmware

Meta



sig-aws

sig-cloud-provider

sig-azure

sig-gcp

sig-ibmcloud

sig-openstack

sig-vmware



sig-docs

Grupos de trabajo (WG)



Grupos de trabajo: esfuerzos entre SIG

Subproyectos: áreas de enfoque para SIGs

Específicamente para:

- Herramientas (ej. Helm)
- Objetivos (ej. Gestión de recursos)
- Áreas (ej. Machine Learning)

Grupos de Trabajo



wg-app-def

wg-apply

wg-container-identity

wg-iot-edge

wg-kubeadm-adoption

wg-machine-learning

wg-multitenancy

wg-policy

wg-resource-management

wg-security-audit



kubernetes

Subproyectos



Usualmente los encuentras
en `kubernetes-sigs/
namespace`

`cloud tools`

`kustomize`

`kubebuilder`

`federation-v2`

`cri-o`

`contributor-site`



Escogiendo el Sig correcto



1. Averigua en qué proyectos / áreas específicas quieres trabajar.
2. Averigüe qué subproyecto SIG / WG / cubre que
 - Pregunte en # sig-contribex
 - Ir a las introducciones de SIG en esta conferencia
3. Únete a ese SIG / subproyecto
 - Si se une a un WG / subproyecto, también únase a un SIG

Tour de repositorios



Refactorización de repositorios





Kubernetes/Kubernetes

La mayoría de los SIG tienen algún interés en el monolito.

Las áreas de propiedad de SIG se pueden encontrar en <https://github.com/k8s.io/community/sigs.yaml>

Proyecto



Repositorio

k/community

k/enhancements

k/steering

k/Test-Infra

k/Perf-Tests

SIG Asociada

Contributor-experience

Release, Architecture

Steering Committee

Testing

Scalability, Testing





k/docs

Herramientas para desarrolladores



k/sample-controller*

k/sample-apiserver*

k/code-generator*

k/k8s.io

k/kubernetes-template-project

Staging repos



k/sample-controller*

k/sample-apiserver*

k/code-generator*

k/k8s.io

k/kubernetes-template-project

code-generator

kube-aggregator

metrics

sample-apiserver

Sigs Repos



k/release

k/federation

k/autoscaler

Repos de proveedores de nubes



`k/cloud-provider-azure`

`k/cloud-provider-gcp`

`k/cloud-provider-openstack`

`k/cloud-provider-alibaba-cloud`

`k/cloud-provider-vsphere`

`k/cloud-provider-aws`

Productos y herramientas



kubeadm

ingress-nginx

kubectl

minikube

kops

dashboard

helm

heapster

charts


kubernetes-anywhere

kompose

kube-openapi

Kubernetes-sigs subproyectos






Kubernetes SIGs

Org for Kubernetes SIG-related work

Repositories 30 **People** 101 **Teams** 58 **Projects** 0


Find a repository... **Type: All** **Language: All**

cluster-api-provider-vsphere

k8s-sig-vmware 

Go ★ 6 🗒 8 Apache-2.0 Updated 5 minutes ago


cluster-api-provider-aws

k8s-sig-clusterlifecycle 

Go ★ 21 🗒 29 Apache-2.0 2 issues need help Updated 19 minutes ago

structured-merge-diff


Test cases and implementation for "server-side apply"

k8s-sig-api-machinery 

Go ★ 2 🗒 7 Apache-2.0 Updated an hour ago

kubebuilder

Kubebuilder - SDK for building Kubernetes APIs using CRDs

k8s-sig-api-machinery 

Go ★ 564 🗒 81 Apache-2.0 5 issues need help Updated an hour ago



kubernetes



Tumba de código

Propio repo y propias reglas



Los repos pueden tener diferentes:

- Propiedad
- Flujos de trabajo de aprobación
- Combinar flujos de trabajo
- Ciclos de liberación (Release cycles)

... Sin embargo, la mayoría son bastante similares.

Listos?



Membresía



<http://git.k8s.io/community/community-membership.md>



Membresía



La membresía afectará su flujo de trabajo de solicitud de extracción y eliminará algunos de los obstáculos.

Merged **Conformance of the names of the conferences #2860**
k8s-ci-robot merged 10 commits into `kubernetes:master` from `eduartua:2716` on Oct 25, 2018

eduartua commented on Oct 25, 2018 Author Member + 😊 ...
/assign @parispittman

k8s-ci-robot assigned **parispittman** on Oct 25, 2018

parispittman commented on Oct 25, 2018 Member + 😊 ...
/ok-to-test

k8s-ci-robot removed the **needs-ok-to-test** label on Oct 25, 2018

parispittman commented on Oct 25, 2018 Member + 😊 ...
/lgtm
/approve
🎉 CONGRATS ON THE PR!! woohooo

👍 1



**Dueños de
Subproyecto**

Set priorities and approve proposals for subproject
Responsibility and leadership for entire repository/directory

**S
Aprobadores**

Approve contributions for acceptance
Highly experienced reviewer and contributor in subproject

Revisores

History of reviewing; reviews frequently
Authorship in subproject

Miembros

Active contributor to the project
Sponsored by two Reviewers

Contribuidores No-miembros

Archivo Ownners



<http://git.k8s.io/community/contributors/guide/owners.md>

Branch: master ▾

kubernetes / OWNERS

Find file

Copy path

 ixdy root OWNERS: escape backslashes

4e9369e on Apr 13

6 contributors 

30 lines (28 sloc) | 562 Bytes

Raw

Blame

History

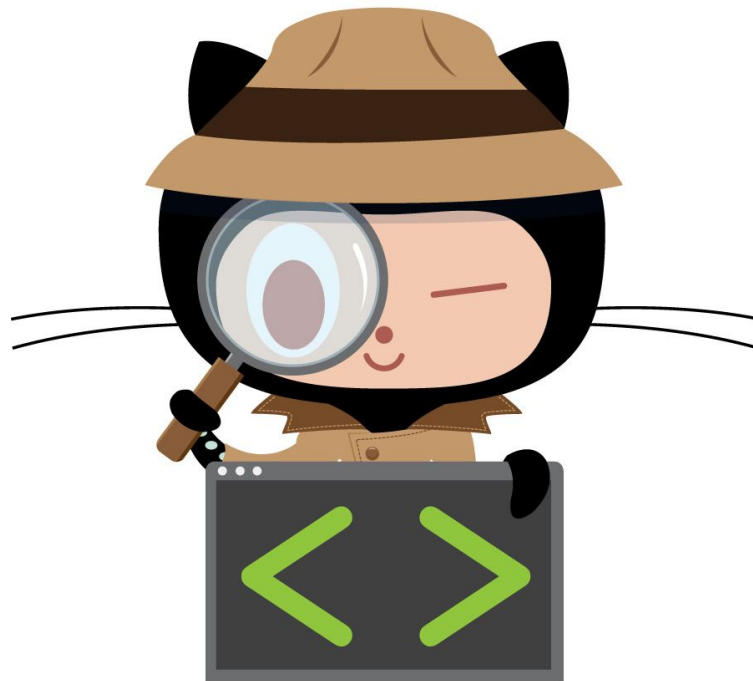


```
1 filters:
2   "*":
3     reviewers:
4       - brendandburns
5       - dchen1107
6       - jbeda
7       - lavalamp
8       - smarterclayton
9       - thockin
10    approvers:
11      - bgrant0607
12      - brendandburns
13      - dchen1107
14      - jbeda
15      - monopole # To move code per kubernetes/community#598
16      - lavalamp
17      - smarterclayton
18      - thockin
19      - wojtek-t
20
21 # Bazel build infrastructure changes often touch files throughout the tree
22 "\\bzl$":
23   reviewers:
24     - ixdy
25   approvers:
26     - ixdy
27 "BUILD(\\.bazel)?$":
28   approvers:
29     - ixdy
```



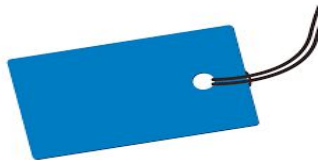
kubernetes

Revisión de código en K8s





Cómo hablar a la automatización de Kubernetes





k8s-ci-robot commented 14 days ago

Owner



Thanks for your pull request. Before we can look at your pull request, you'll need to sign a Contributor License Agreement (CLA).

Please follow instructions at <https://git.k8s.io/community/CLA.md#the-contributor-license-agreement> to sign the CLA.

It may take a couple minutes for the CLA signature to be fully registered; after that, please reply here with a new comment and we'll verify. Thanks.

- If you've already signed a CLA, it's possible we don't have your GitHub username or you're using a different email address. Check your existing CLA data and verify that your [email is set on your git commits](#).
- If you signed the CLA as a corporation, please sign in with your organization's credentials at <https://identity.linuxfoundation.org/projects/cncf> to be authorized.
- If you have done the above and are still having issues with the CLA being reported as unsigned, please email the CNCF helpdesk: helpdesk@rt.linuxfoundation.org

► Details

k8s-ci-robot added the **cncf-cla: no** label 14 days ago

k8s-ci-robot requested review from **idvoretskyi** and **tpepper** 14 days ago

k8s-ci-robot added the **needs-ok-to-test** label 14 days ago

guineveresaenger

Labels

- approved**
- area/contributor-guide**
- cncf-cla: no**
- lgtn**
- needs-rebase**
- sig/contributor-experience**
- size/XS**

Projects

None yet

Milestone

No milestone

Notifications

You're receiving notifications because you were mentioned.

7 participants



2,178 Open ✓ 25,954 Closed

Author ▾

Labels ▾

Projects ▾

Milestones ▾

Assignee ▾

Sort ▾

🚩 controller-manager and kubelet not taking into account --cloud-provider and --cloud-config until added twice **kind/bug**

#71606 opened 41 minutes ago by manurodriguez

🚩 Kube-Controller-Manager serves insecurely on IPv6 ([::]:<PORT>) (v1.12.0) **area/controller-manager**
sig/cluster-lifecycle

#71600 opened 2 hours ago by m-no-2017

💬 1

🚩 client-go/testing: inconsistent behavior around evictions **kind/bug** **needs-sig**

#71598 opened 3 hours ago by bouk

💬 2

🚩 Traffic loss with externalTrafficPolicy:Local and proxy-mode=ipvs **area/ipvs** **kind/bug** **sig/network**

#71596 opened 5 hours ago by uablrek

💬 1

🚩 Cloud Controller Manager for Azure did not delete Scale Set instance **kind/bug** **sig/azure**

#71595 opened 6 hours ago by marc-sensenich

💬 1

🚩 Azure provider triggers VMSS manual upgrade which restarts all instances at the same time **kind/bug**
sig/azure

#71594 opened 7 hours ago by sylr

💬 1

🚩 Probe httpHeaders "Host" is lost after redirect **kind/bug** **sig/network** **sig/node**

#71592 opened 7 hours ago by johnraz

💬 1

🚩 Namespace deletion got stuck by Unknown pods **kind/feature** **sig/apps**

#71590 opened 10 hours ago by DylanBLE

💬 1

🚩 Pod using subpath with nfs is stuck in terminating **kind/bug** **sig/storage**

#71584 opened 16 hours ago by msau42



💬 3

🚩 Document or remove KUBERNETES_CONFORMANCE_PROVIDER **area/conformance** **kind/cleanup**
priority/important-longterm **sig/testing**

#71579 opened 17 hours ago by spiffxp

💬 2



Etiquetas requeridas para issues



En creación:

sig/

kind/

Agregadas luego:

priority/

<https://go.k8s.io/bot-commands>



kubernetes

La etiqueta SIG



Label

sig/auth

sig/testing

sig/api-machinery

sig/node

Bot command

/sig auth

/sig testing

/sig api-machinery

/sig node

Agregando una etiqueta a un issue o PR



guineveresaenger commented on Dec 14, 2017

Member



`/sig contributor-experience`



Etiqueta kind



kind/bug

kind/failing-test

kind/feature

kind/flake

kind/documentation

kind/cleanup

kind/design

Example bot command: /kind feature



Etiqueta priority



priority/critical-urgent

priority/important-soon

priority/important-longterm

priority/backlog

priority/awaiting-evidence

Example bot command: /priority critical-urgent



kubernetes

Etiqueta area



area/kubectl

area/api

area/dns

area/platform/gce

Etiqueta triage



triage/duplicate

triage/needs-information

triage/support

triage/unreproducible

triage/unresolved

Etiquetas adicionales para PRs



release-note

approved

lgtm

cherry-pick-approved (solamente para ciertas fases del release cycle)



Plumb token and token file through rest.Config • approved area/apiserver area/kubelet 10
cncf-cla: yes kind/bug priority/important-soon release-note sig/api-machinery sig/auth sig/node size/L
#71713 opened 4 hours ago by liggitt v1.13

change default leader election resource lock from endpoints to configmap • cncf-cla: yes 3
kind/api-change needs-ok-to-test needs-priority needs-sig release-note-none size/XS
#71710 opened 5 hours ago by gaorong

fix WaitForAllNodesSchedulable so it outputs logs when cluster size is small • cncf-cla: yes 3
needs-kind needs-ok-to-test needs-priority release-note-none sig/testing size/XS
#71709 opened 6 hours ago by Joseph-Irving

WIP: e2e: manifest url cache ✗ cncf-cla: yes do-not-merge/hold do-not-merge/work-in-progress 4
kind/cleanup needs-priority release-note-none sig/testing size/L
#71703 opened 9 hours ago by pohly

[WIP] kubeadm: move test utilites out of /test • area/kubeadm cncf-cla: yes 4
do-not-merge/work-in-progress kind/cleanup needs-ok-to-test needs-priority release-note-none
sig/cluster-lifecycle size/S
#71702 opened 10 hours ago by yuexiao-wang

Reduce resource quota version update conflict in controller • cncf-cla: yes needs-kind 3
needs-ok-to-test needs-priority release-note-none sig/apps size/XS
#71701 opened 10 hours ago by Nebulazhang

create pod failed and retry, add random sleep time to reduce the quota version conflict • 3
cncf-cla: yes kind/design needs-ok-to-test needs-priority release-note-none sig/api-machinery size/S
#71700 opened 10 hours ago by Nebulazhang





k8s-ci-robot commented 21 days ago

Member



[APPROVALNOTIFIER] This PR is **NOT APPROVED**

This pull-request has been approved by:

To fully approve this pull request, please assign additional approvers.

We suggest the following additional approver: **jbeda**

If they are not already assigned, you can assign the PR to them by writing `/assign @jbeda` in a comment when ready.

The full list of commands accepted by this bot can be found [here](#).

The pull request process is described [here](#)

▼ Details

Needs approval from an approver in each of these files:

- [contributors/design-proposals/architecture/OWNERS](#)

Approvers can indicate their approval by writing `/approve` in a comment

Approvers can cancel approval by writing `/approve cancel` in a comment



kubernetes

Etiquetas que te pueden ayudar en primer issue



help wanted

- Baja barrera en nivel de entrada
- Tarea clara

good first issue

- Dedicada para nuevos
- Proporciona apoyo y orientación continuos.





Filters ▾

🔍 is:issue is:open label:"help wanted"

Labels

Milestones

New issue

✕ Clear current search query, filters, and sorts

🚨 78 Open ✓ 97 Closed

Author ▾

Labels ▾

Projects ▾

Milestones ▾

Assignee ▾

Sort ▾

🚨 **sample-controller should have an example of the polymorphic scale client** **help wanted** 🗨️ 2

kind/feature **sig/api-machinery**

#60023 opened 4 days ago by nikhita

🚨 **admission webhooks: Test: kube-apiserver should start even if webhooks block every API** 🗨️ 6

action. **help wanted** **priority/important-soon** **sig/api-machinery**

#59124 opened 22 days ago by lavalamp

But Wait!



There's More!



kubernetes

Otros comandos del bot



Comando

Resultado

`/assign @username`

Asigna un revisor

`/retest`

re-hace pruebas fallidas

`/close`

Cierra PR

`/cc @username`

Etiqueta un usuario

Links de referencia



<http://git.k8s.io/community/community-membership.md>

<http://git.k8s.io/community/contributors/guide/owners.md>

<https://go.k8s.io/bot-commands>

<https://github.com/kubernetes/test-infra>



Reportando issues

Una declaración del problema
es el comienzo



Want to submit an issue to kubernetes/kubernetes?

Dismiss

If you have a bug or an idea, read the [contributing guidelines](#) before opening an issue.

Issues labeled **help wanted** can be good first contributions.



Filters ▾

🔍 is:issue is:open

Labels

Milestones

New issue

🚩 3,603 Open ✓ 20,459 Closed

Author ▾

Labels ▾

Projects ▾

Milestones ▾

Assignee ▾

Sort ▾



System-cluster-critical and system-node-critical priorityClasses should be in API storage



🗨️ 1

sig/scheduling

#60178 opened 17 minutes ago by ravisantoshgudimetla



Add local PV e2e block test for GCE local SSD **kind/feature** **sig/storage**



#60177 opened an hour ago by msau42



Device Plugin failure handling in kubelet is racy **kind/bug** **sig/node**



🗨️ 2

#60176 opened an hour ago by vishh 🏷️ v1.10



kubeadm ha cluster: kube-proxy not able to authenticate / controller-manager not able to connect **needs-sig**

🗨️ 1

#60169 opened 3 hours ago by dgabrysch



Process to enable secure cloud-provider to use FQDN certificates for authentication **kind/feature**

🗨️ 0

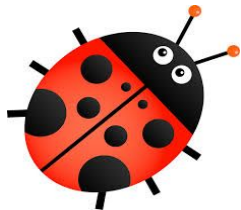


kubernetes

Ejemplo: reporte de bugs



Find the right
repo



Create report



Follow up

Issues 3,603

Pull requests 1,041

Projects 11

Insights

Title

Write

Preview

AA

B

i

“

<>

🔗

☰

☰

☰

↶

@

★

<!-- This form is for bug reports and feature requests ONLY!

If you're looking for help check [Stack Overflow]

(<https://stackoverflow.com/questions/tagged/kubernetes>) and the [troubleshooting guide]

(<https://kubernetes.io/docs/tasks/debug-application-cluster/troubleshooting/>).

-->

****Is this a BUG REPORT or FEATURE REQUEST?**:**

> Uncomment only one, leave it on its own line:

>

> /kind bug

> /kind feature

****What happened**:**

****What you expected to happen**:**

Attach files by dragging & dropping, [selecting them](#), or pasting from the clipboard.

Styling with Markdown is supported

Submit new issue



It looks like this is your first time opening an issue in this project!

Be sure to review the [contributing guidelines](#) and [code of conduct](#).

Looking for help?

Check out the project's [instructions for getting support](#).



kubernetes

What happened:

When use an existing azure disk(also called [static provisioning](#)) in pod, if that disk has partitions, the disk will be formatted in the pod mounting.

How to reproduce it (as minimally and precisely as possible):

- create a disk with source from an os disk, e.g.

```
az disk create --name duposdisk --resource-group  
andy-mg110 --sku Standard_LRS --size-gb 30 --location  
westus2 --source  
https://xxx.blob.core.windows.net/osdisk/k8s-agentpool-  
33591117-0-osdisk.vhd
```

- [use disk static provisioning for that copied disk](#)
- `kubectl exec -it nginx-azuredisk -- bash`
- that disk is already formatted before pod could

Tu turno



Issues y Pull Request en la práctica



Los lineamientos de K8 sugieren, para contribuir:

1. Identifica algo en qué trabajar
 - a. documentación
 - b. SIGs
2. Genera un issue (en GitHub)
3. Genera el pull request para el issue asociado

Issues y Pull Request en la práctica



- Antes de hacer tu Pull Request
 - verifica tu código localmente -aunque tarde VARIOS minutos-
 - firma [The Contributor License Agreement](#) según seas un individuo o una corporación
- Abre tu [Pull Request](#) -ya que hayas cumplido los pasos anteriores-
- Pasa todas las pruebas e2e
- Consigue las aprobaciones de los involucrados (*reviewers* y *code owners*)

Local Build & Test

Para contribuidores

Entorno de desarrollo

- Tiene
 - Mucha RAM y CPU
 - multiple 10's of GB's disk
- Usa Linux
- Coloca k8s git repo fork en:
 - `$GOPATH/src/k8s.io/kubernetes`

<https://www.flickr.com/photos/vestman/3900877043/>
By Vestman (vestman) [CC BY 2.0], via flickr



Building

- Golang!
- So (un)naturally you do:
 - `cd kubernetes/`
 - `./build/run.sh make`
- Many make targets:
 - `make quick-release`
 - `make WHAT='cmd/kubectl'`
- Whaaat?



Testing - bit.ly/k8s-ncw-testing

- Unit: test via native golang
 - Integration: test package or component interactions
 - End-to-end (“e2e”): tests overall system behavior and coherence on a fully integrated cluster
-
- Conformance: subset of e2e, tests SIG Architecture approved to define the core set of interoperable features

Testing - bit.ly/k8s-ncw-testing

- Unit: test via native golang
 - Example: run kubectl's unit tests
 - `cd pkg/kubectl; go test ./...`
- Integration: test package or component interactions
 - Example: run a test of k8s code + etcd
 - `hack/install-etcd.sh; make test-integration`

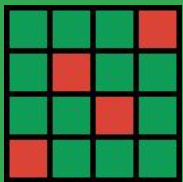
Testing - bit.ly/k8s-ncw-testing

- End-to-end (“e2e”): tests overall system behavior and coherence on a fully integrated cluster
 - Example: run a focused e2e test
 - `sudo PATH=$PATH hack/local-up-cluster.sh`
 - `export KUBECONFIG=/path/to/kubeconfig`
 - `kubetest --provider=local --test --test_args="--minStartupPods=1 --ginkgo.focus=Secrets"`
- Conformance: subset of e2e, tests SIG Architecture approved to define the core set of interoperable features
 - Example: run the conformance tests
 - (see above on local up)
 - `make WHAT="test/e2e/e2e.test vendor/github.com/onsi/ginkgo/ginkgo cmd/kubectl"`
 - `kubetest --provider=skeleton --test --test_args="--ginkgo.focus=[Conformance]"`

Testing with Minikube

- <https://github.com/kubernetes/minikube/>
- A kubernetes cluster-in-a-VM on your local machine!
- Requirements:
 - host machine with kubectl
 - guest VM ability
 - host<->guest networking and internet connectivity

The Kubernetes Testgrid



TestGrid

Your Test Results, in a Grid

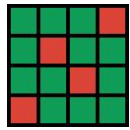
Michelle Shepardson (SETI @ Google)

amerai@ on #sig-testing

michelle192837 on GitHub

Live Demo

<https://testgrid.k8s.io>



TestGrid

<https://testgrid.k8s.io>

Slack

#sig-testing

amerai@

GitHub



¿Dónde contribuir?



Hay múltiples formas de contribuir:

- Documentación del proyecto y el sitio web.
 - <https://kubernetes.io/docs/contribute/>

- Desarrollo de características y correcciones.
 - <https://github.com/kubernetes/community/tree/master/contributors/guide/contributor-cheatsheet>

Comunicación

Pedimos que te familiarices con el [Código de Conducta](#)

La comunicación exitosa depende de lo bien coordinadas que estén las partes involucradas. Por lo tanto, y entre otras cosas, no se permite:

- uso de palabras o imágenes con contenido sexual,
- ataques personales,
- comentarios insultantes o despectivos,
- acoso público o privado,
- publicar información privada ajena sin permiso para hacerlo,
- cualquier conducta reñida con la ética o el profesionalismo

Siempre que notes algo que no está bien, comunícalo en conduct@kubernetes.io

Comunicación



Y una vez que tienes claro cuáles son las reglas en esta comunidad usa algunos de los medios disponibles:

- Busca los canales para los SIGs donde desees participar
 - slack (slack.k8s.io)
 - listas de correo

- Social Media
 - twitter (@kubernetesio)
 - stackoverflow

Comunicación



Reúnete (virtualmente) con tu equipo de trabajo:

- Office hours mensuales
 - Sesiones públicas, vía Youtube, donde se discuten temas de interés para la comunidad.
 - Se pueden plantear preguntas vía slack o recuperar algunas publicadas en StackOverflow.
 - Está orientado a usuarios y a operadores de K8.
 - Hay un histórico, en Youtube, de las versiones pasadas.
- Reuniones semanales
 - mediante videollamadas discuten los temas de interés para los grupos de trabajo.

Comunicación



Sé parte de las conferencias y eventos de comunidad más grandes:

- KubeCon y CloudNativeCon

- “The [Cloud Native Computing Foundation’s](#) flagship conference gathers adopters and technologists from leading open source and cloud native communities”



- “The obvious conclusion: If you’re interested in enterprise IT infrastructure, Kubernetes should be your technology of choice, and KubeCon is the place to be.” – Jason Bloomberg, SiliconANGLE

- Noviembre 18-21, San Diego, California



El sistema de los SIG



Los “Special Interest Groups” es el mecanismo para ordenar y agrupar K8.

Se usan para controlar y transparentar el desarrollo de subproyectos.

El sistema de los SIG



Algunos SIG de Kubernetes son:

- CLI
- Autoscaling
- Network
- Docs

Cada SIG tiene sus propias políticas de contribuciones.



Kubernetes Community Governance Model



Steering Committee



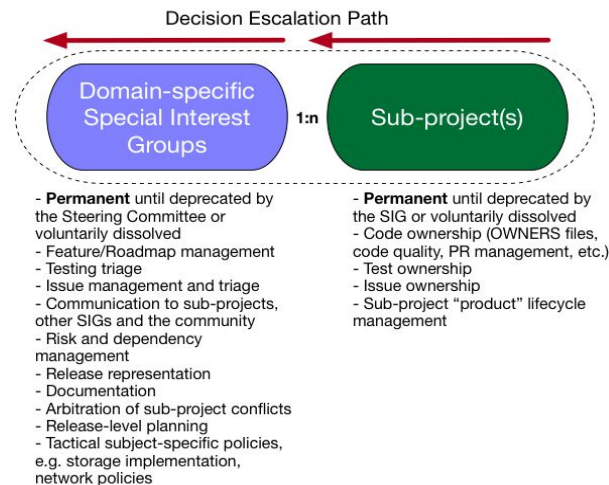
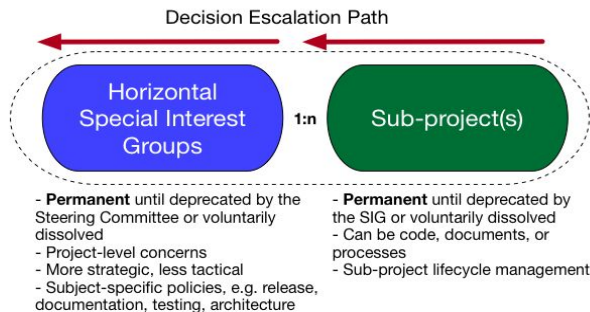
Sub-committees

- Project-level governance
- Binding/final arbitration
- Management of sub-structures
- Security process management
- Manage project-level policies such as the Code of Conduct



Working Group

- Organized to solve a **specific problem** then **dissolve**
- Cross-SIG collaboration around a specific effort
- Does not own code
- Can spawn sub-projects in participating SIGs
- Define and address gaps



Tour de repositorios

Flujos de Trabajo y Automatización

Issues y Pull Request en la Práctica

Los lineamientos de K8 sugieren, para contribuir:

1. [Identifica algo en qué trabajar](#)
2. [Genera un issue](#) (en github)
3. [Genera el pull request para el issue asociado](#)

Issues y Pull Request en la Práctica

- Antes de hacer tu Pull Request
 - verifica tu código localmente -aunque tarde VARIOS minutos-
 - firma [The Contributor License Agreement](#) según seas un individuo o una corporación
- Abre tu [Pull Request](#) -ya que hayas cumplido los pasos anteriores-
- Pasa todas las pruebas e2e
- Consigue las aprobaciones de los involucrados (*reviewers* y *code owners*)

Local Build y Test

- Construye localmente tu ambiente de Kubernetes
 - Kubernetes está escrito en Go por lo que debes tener un ambiente de desarrollo con Go
 - El comando rsync debe existir en tu ambiente de desarrollo
 - Asegura que tienes las versiones actualizadas de herramientas GNU para el desarrollo (mac y linux)
- También puedes usar Docker para tener Kubernetes
- Sigue el GitHub workflow para acceder al código fuente

Kubernetes	requires Go
1.0 - 1.2	1.4.2
1.3, 1.4	1.6
1.5, 1.6	1.7 - 1.7.5
1.7	1.8.1
1.8	1.8.3
1.9	1.9.1
1.10	1.9.1
1.11	1.10.2
1.12	1.10.4
1.13	1.11.13
1.14+	1.12.9

Github

<https://github.com/kubernetes/kubernetes>



Step 1. Fork your own copy of repo **kubernetes** to your Github account

[https://github.com/\\$user/kubernetes](https://github.com/$user/kubernetes)

Step 7. Create Pull Request



Clone or download ▾

Step 2. Clone the forked repo
to your local working directory

`$ git clone https://github.com/$user/kubernetes.git`

Step 3. Fetch and Rebase

```
$ git remote add upstream \  
https://github.com/kubernetes/kubernetes.git  
$ git fetch upstream  
$ git checkout master  
$ git rebase upstream/master
```

Step 6. Push branch *mybranch*
to your forked repo on github.com

```
$ git push -f $remotename mybranch
```

`$local_working_dir/kubernetes`

Step 5. Make any change
on the branch *mybranch*

```
$ git add <file>  
$ git commit
```

Step 4. Create a branch to add a new
feature or fix issues

```
$ git checkout -b mybranch
```

Branch: mybranch

After **Step 7.**, if has any further
modification of source codes:

```
$ git commit --amend  
$ git push -f $remotename mybranch
```

Local
working
directory

Testgrid Tour

Contribuciones a documentos

El ciclo de release

Ir más allá

SIG para conocer y saludar